

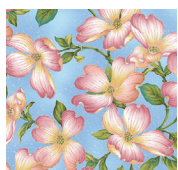


American Quilter's Society

Anniversary Dogwood

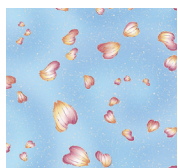


Yardage and Cutting:



Large Blue Floral – $\frac{3}{4}$ yard

- (16) 5" squares
- (5) 4½" squares
- (1) 4½" x WOF strip



Small Blue Floral – $\frac{1}{4}$ yard

- (8) 5" squares



Cream – $\frac{1}{2}$ yard

- (8) 5" squares
- (4) 2½" x WOF strips

Pink – $\frac{3}{4}$ yard

- (8) 2½" strips x WOF
(includes binding)
- (1) 4½" by WOF strip

Stripe – $\frac{1}{2}$ yard

- (4) 4½" x 32½" across the WOF

Green – $\frac{1}{4}$ yard

- (4) 4½" squares

Backing – 1½ yards your choice of fabric



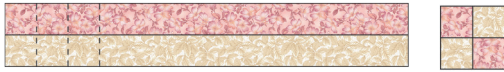
Anniversary Dogwood

Assembly Instructions

Make strip sets:

Strip-set #1 – 2½" x WOF Pink and 2½" x WOF Cream

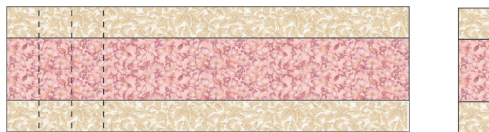
Stitch and subcut into 2½" segments. Stitch into a Four-Patch unit.



Make 12
Four-Patch
units.

Strip-set #2 – 2½" x WOF Cream, 4½" x WOF Pink, and 2½" x WOF Cream

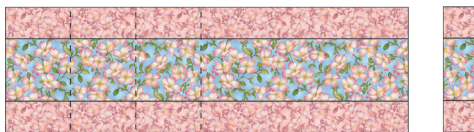
Stitch and subcut into (10) 2½" segments.



Make 10.

Strip-set #3 – 2½" x WOF Pink, 4½" x WOF Large Blue Floral, and 2½" x WOF Pink

Stitch and subcut into (5) 4½" segments.



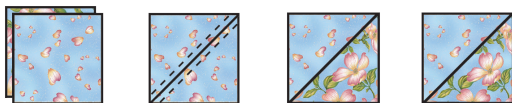
Make 5.

Make half square triangles (HSTs):

Make (16) HSTs using (8) Large Blue Floral and (8) Small Blue Floral 5" squares.

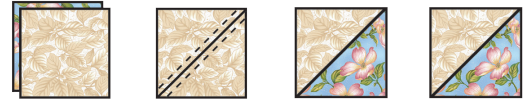
Place one Large Blue Floral and one Small Blue Floral 5" squares right sides together. Draw a diagonal line from corner to corner on the wrong side of the lighter square. Stitch ¼" away on each side of the drawn line.

Cut apart on the drawn line and press toward the darker fabric. Trim to 4½". Repeat with remaining Large Blue and Small Blue Floral 5" squares to yield (16) 4½" HST units.

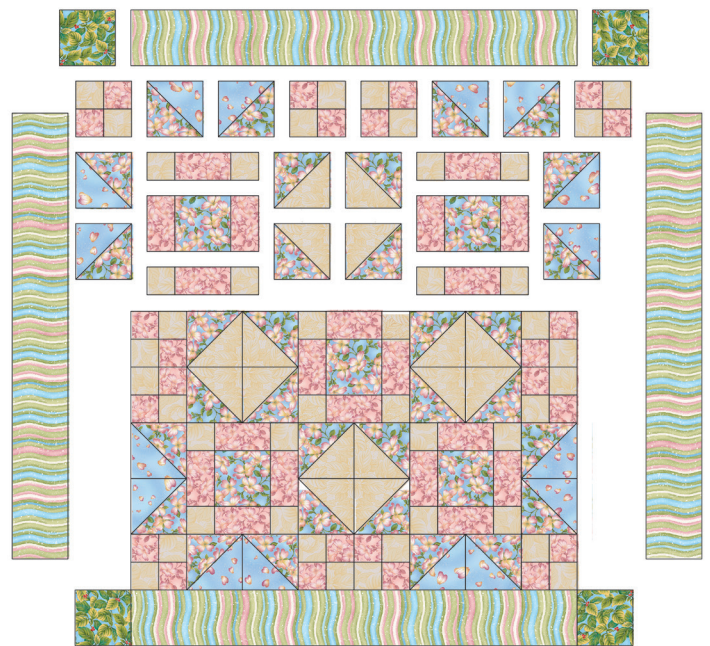


Make (16) HSTs using (8) Large Blue Floral and (8) Cream 5" squares.

Repeat the HST instructions above using (8) Large Blue Floral and (8) Cream 5" squares to yield (16) HST units.



Lav out the blocks using the placement diagram below.



Add the Stripe to the sides of the quilt.

Add 4½" squares of Green to the short sides of (2) 4½" x 32½" Stripe and then add to the top and bottom of the quilt.

Quilt as desired and bind using the remaining 2½" strips of Pink. Don't forget the label!